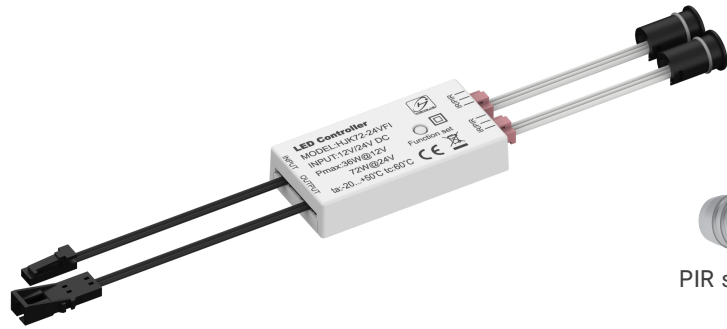


# NEW PRODUCT 2022

## MINI IR/PIR Sensor Switch

HJK72-24VFI, Max.36W@12V DC, Max.72W@24V DC



PIR sensor

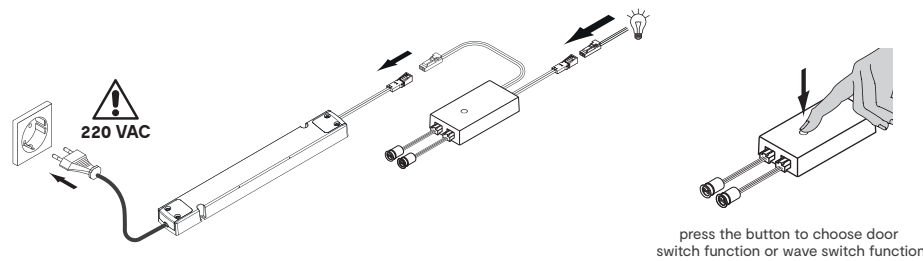
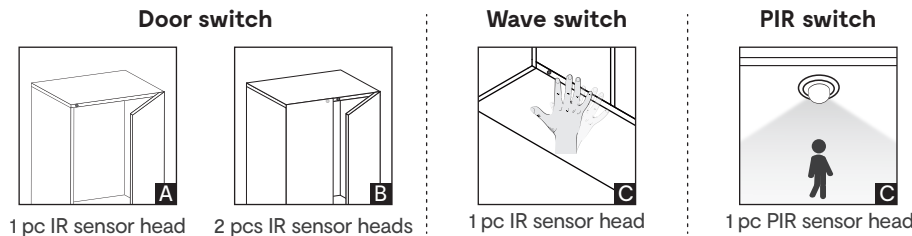


### FEATURES

- Super mini dimension: 60x30x12mm
- Both IR sensor switch and PIR sensor switch available
- Both 12V and 24V universal
- Connect with max.2pcs sensor heads
- Economic design compare with standard version

### Installation:

\* Sensor head with recessed mounting, receiver with surface mounting.



### TECHNIC DATA

Item Code	Dimension	Power	Input Voltage	Rated Current	Standby Power
HJK72-24VFI	60x30x12mm	36W	12V DC	3A	≤0.5W
		72W	24V DC		

Function: [A] Door switch with 1pc IR sensor head: when open the door, light turn on; when close the door, light turn off.

[B] Door switch with 2pcs IR sensor heads: when open any door, light turn on; only when close both doors, light turn off.

In the application of door switch: when the door remains open, the switch will turn off light automatically after 20 mins. Open/close the door again to restore settings.

[C] Wave hand switch: Wave hand first time, switch light on; wave hand second time, switch light off; wave hand third time, switch light on again (and so on).

[D] PIR-S switch the light on when people moving in the detection area. After the set time, if there is no any motion detecting, it switch off the light.

### Size(mm):

